

SPECIMEN PLANTING SCHEDULE: 985			
Species	Common Name	Mature Size (HxDia.-metres)	Native
Amenity Shade Trees			
<i>Diploglottis campbellii</i>	Small Leaved Tamarind	7-10 x 6-8	✓
<i>Elaeocarpus eumundii</i>	Eumundal quandong	5-8 x 2-4	✓
<i>Harpullia pendula</i>	Tulip Wood	6 x 6	✓
<i>Tristanopsis laurina</i>	Water gum	5-8 x 4-6	✓
<i>Waterhousea floribunda</i>	Weeping Lilly Pilly	6-8 x 4-6	✓
Specimen Trees			
<i>Allocasuaria flammula</i>	Queensland Tree Waratah	20 x 5	✓
<i>Brachychiton acerifolius</i>	Illawarra Flame Tree	12 x 6	✓
<i>Melicope eileryana</i>	Butterfly Tree	5-8 x 3-5	✓
<i>Stenocarpus sinuatus</i>	Wheel of Fire Tree	5-8 x 2-3	✓
Small Ornamental Trees			
<i>Backhousia citrifolia</i>	Lemon Scented Myrtle	6-8 x 3-4	✓
<i>Callistemon viminalis</i> (Dawson River)	Weeping bottlebrush (cv)	5 x 5	✓
<i>Lagerstroemia indica</i> x L. fauriei 'Biloxi' (Indian Summer variety)	Crepe Myrtle Indian Summer variety (pale pink) (cv)	3 x 4	✓
<i>Lagerstroemia indica</i> x L. fauriei 'Natchez' (Indian Summer variety)	Crepe Myrtle Indian Summer variety (white) (cv)	3 x 4	✓
<i>Leptospermum madidum</i>	Weeping Tea Tree	3 x 3	✓
<i>Magnolia grandiflora</i> 'Little Gem'	Magnolia (cv)	6 x 3	✓
Screening Shrubs			
<i>Acmena smithii</i> minor	Narrow Leaved Lilly Pilly	6-10 x 4-6	✓
<i>Callistemon viminalis</i> 'Slim'	Weeping bottlebrush (cv)	3 x 1.3	✓
<i>Callistemon polandii</i>	Gold Tipped Bottle Brush	2-4 x 2-3	✓
<i>Elaeocarpus reticulatus</i>	Blue Berry Ash	3-15 x 3-5	✓
<i>Syzygium australe</i>	Scrub Cherry	6-8 x 3-4	✓
<i>Syzygium australe</i> 'Straight and Narrow'	Lilly Pilly (cv)	5-8 x 1-1.5	✓
<i>Syzygium 'Cascade'</i>	Lilly Pilly (cv)	2-3 x 2	✓
<i>Syzygium luehmianii</i> 'Lulu'	Small Leaved Lilly Pilly (cv)	4 x 2	✓
<i>Syzygium paniculatum</i>	Lilly Pilly	6-8 x 3-4	✓
Small Shrubs			
<i>Callistemon salignus</i> 'Great Balls of Fire'	Bottlebrush (cv)	1.75 x 1.75	✓
<i>Callistemon viminalis</i> 'Green John'	Weeping bottlebrush (cv)	0.6-1 x 0.6	✓
<i>Grevillea</i> species	Grevillea	1-3 x 1-3	✓
<i>Leptospermum</i> species	Tea Tree	1.5-2 x 2	✓
<i>Nandina domestica</i>	Sacred Japanese Bamboo	1.5 x 2	✓
<i>Philodendron</i> 'Xanadu'	Philodendron (cv)	0.6-0.8 x 0.6-0.8	✓
<i>Rhaphiolepis indica</i> 'Oriental Pearl'	Indian Hawthorn (cv)	0.8-1 x 1	✓
<i>Westringea fruticosa</i>	Coastal Rosemary	1 x 2	✓
Clumping Groundcovers			
<i>Banksia integrifolia</i> prostrate	Prostrate Coastal Banksia		✓
<i>Dianella</i> species	Flax Lilly		✓
<i>Dietes grandiflora</i>	Spanish Iris		✓
<i>Hymenocallis littoralis</i>	Spider Lilly		✓
<i>Liriope muscari</i> 'Just Right'	Turf Lilly (cv)		✓
<i>Lomandra fluviatilis</i> 'Shara'	Mat Rush (cv)		✓
<i>Lomandra hystrix</i>	Mat Rush		✓
<i>Lomandra longifolia</i> 'Verday'	Mat rush (cv)		✓
Prostrate Groundcovers			
<i>Austromyrtus dulcis</i>	Midym		✓
<i>Carpobrotus glaucescens</i>	Pig Face		✓
<i>Myoporum ellipticum</i>	Coastal Myoporum		✓
<i>Trachelospermum jasminoides</i> 'Tricolour'	Variegated Jasmine (cv)		✓
Vines			
<i>Pandorea jasminoides</i>	Bower of Beauty		✓
<i>Trachelospermum jasminoides</i>	Star Jasmine		✓
Macrophytes			
<i>Carex appressa</i>	Tall Sedge		✓
<i>Ricinia nodosa</i>	Knobby Club Rush		✓
<i>Juncus ustulatus</i>	Common Rush		✓

NOTES:

- THIS CONCEPT DESIGN IS BASED ON ARCHITECTURAL AND CIVIL WORKS DOCUMENTATION PROVIDED.
- ALL EXISTING SERVICES TO BE IDENTIFIED ON SITE PRIOR TO COMMENCEMENT OF WORKS.
- SPECIMEN PLANTING SCHEDULE BASED ON LISMORE CITY COUNCIL 'LANDSCAPING GUIDELINES' WITH REFERENCE TO 'BASIC' REQUIREMENTS.

LEGEND:	
	GRASSSED AREA SELECT SPECIES TURF.
	GARDEN BED ORGANIC MULCHED.
	BARK MULCHED AREA NO PLANTING.
	DETENTION BASIN AS PER CIVIL WORKS DETAILS.
	UNIT PAVING 600x600mm PRE-CAST CONCRETE UNITS.
	METAL EDGING PROPRIETARY ITEM- GALVANISED FINISH.
	DEMOLITION ITEMS TO BE REMOVED.
	HARD SURFACE P.O.S. AS PER ARCHITECTURAL SCHEME.
	CONCRETE SURFACE DRIVE, PARKING+ ACCESS AS PER ARCHITECTURAL SCHEME.
	EXISTING TREE TO BE RETAINED- REFER ARBORISTS REPORT.
	EXISTING TREE TO BE REMOVED- REFER ARBORISTS REPORT.

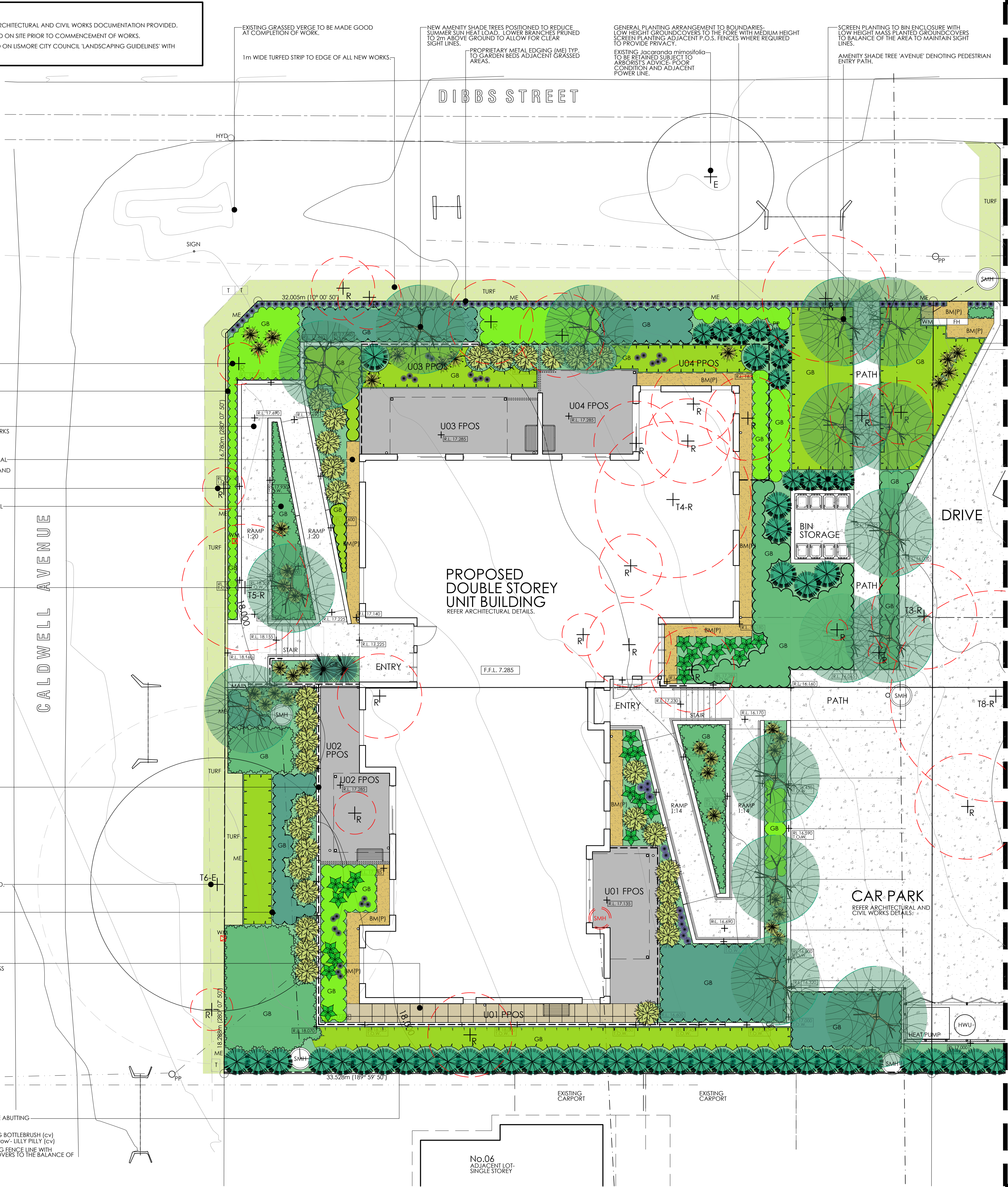
RETAINING WALLS AND FENCING AS PER ARCHITECTURAL SCHEME TYP.

EXISTING *Callistemon* spp. TO BE RETAINED. PROTECT DURING CONSTRUCTION. REFER ARBORISTS REPORT.

PROPRIETARY METAL EDGING (ME) TYP. TO GARDEN BEDS ADJACENT GRASSSED AREAS.

600x600mm PRE-CAST CONCRETE UNIT PAVERS TO DRYING AREA AND AS ACCESS TO REAR P.O.S.

SCREEN PLANTING TO BOUNDARY WHERE ABUTTING PRIVATE HOUSING.
EXAMPLE SPECIES INCLUDE:
• *Callistemon viminalis* 'Slim'- WEeping BOTTLBRUSH (cv)
• *Syzygium australe* 'Straight and Narrow'- LILLY PILLY (cv)
SCREEN PLANTING IN SINGLE ROW ALONG FENCE LINE WITH LOW HEIGHT MASS PLANTED GROUNDCOVERS TO THE BALANCE OF THE AREA AS INDICATED.



THIS SHEET TO BE PRINTED IN COLOUR.				
B	20.6.2023	ISSUE FOR APPROVALS.	DB	
A	30.4.2023	ISSUE FOR APPROVALS.	DB	
P1	24.4.2023	PRELIMINARY ISSUE.	DB	
REV.	DATE	DETAILS	INITIAL	
Figured dimensions take precedence over those scaled. Verify all dimensions on site before commencing any work or shop drawings. If any doubt ask. Copyright of all drawings and documents and of the work executed is vested in the Principal's Consultants.				
THIS DOCUMENT DESCRIBES THE FULL INTENT OF LANDSCAPE DESIGN. ALDERSON+ ASSOCIATES TAKE NO RESPONSIBILITY FOR ANY 'AS CONSTRUCTED' VARIATION FROM THEIR DRAWINGS AND DOCUMENTS, INCLUDING HARD LANDSCAPING SETOUT AND SOFT LANDSCAPING INSTALLATION.				
ALDERSON + ASSOCIATES LANDSCAPE ARCHITECTS				
A.B.N. 72 537 115 625 PH:040 991 5853 PH:07 4974 1184 LISMORE: P.O. BOX 6282 SOUTH LISMORE, NSW 2480 GLADSTONE: OLD MANY PEAKS SCHOOL BOYNE VALLEY, QLD 4680 EMAIL: design@landscapearchitects.com.au				
CLIENT:				
LEVEL 4, 4 PARRAMATTA SQUARE, PARRAMATTA, N.S.W. 2150				
PROJECT:				
GENERAL HOUSING				
1-3 WALKER STREET, 2-4 CALDWELL STREET EAST LISMORE, N.S.W.				
DRAWING TITLE:				
LANDSCAPE CONCEPT PLAN 1: PART SITE				
NORTH:				
DATE: APRIL 2023 DRAWN: DB SCALE: 1:100 AT A1				
PROJECT NO.: 985 DWG NO.: 995-LCP01 REVISION: B				

